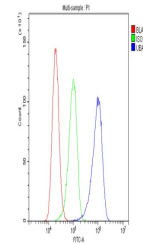


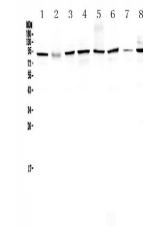
Product Datasheet

SAE2/UBA2 Antibody (orb402291)

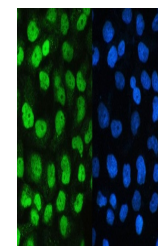
Description	SAE2/UBA2 Antibody
Species/Host	Rabbit
Reactivity	Human, Mouse, Rat
Conjugation	Unconjugated
Tested Applications	ELISA, FC, ICC, IF, IHC, IHC-Fr, WB
Immunogen	E. coli-derived human SAE2/UBA2 recombinant protein (Position: E449-K564).
Form/Appearance	Lyophilized
Concentration	Adding 0.2 ml of distilled water will yield a concentration of 500 µg/ml.
Storage	Store at -20°C for one year from date of receipt. After reconstitution, at 4°C for one month. It can also be aliquotted and stored frozen at -20°C for six months. Avoid repeated freeze-thaw cycles.
Note	For research use only
Application notes	Add 0.2ml of distilled water will yield a concentration of 500ug/ml.
Isotype	Rabbit IgG
Clonality	Polyclonal
MW	90 kDa
Uniprot ID	Q9UBT2
Expiration Date	12 months from date of receipt.



Flow Cytometry analysis of A431 cells us...



WB analysis of SAE2/UBA2 using anti-SAE2...



IF analysis of SAE2/UBA2 using anti-SAE2...