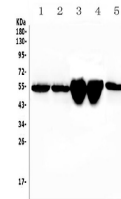


Product Datasheet

Vitamin D Binding protein/Gc Antibody (orb402288)

Description	Vitamin D Binding protein/Gc Antibody
Species/Host	Rabbit
Reactivity	Mouse, Rat
Conjugation	Unconjugated
Tested Applications	ELISA, WB
Immunogen	E. coli-derived mouse Gc recombinant protein (Position: L17-E256).
Form/Appearance	Lyophilized
Concentration	Adding 0.2 ml of distilled water will yield a concentration of 500 µg/ml.
Storage	Store at -20°C for one year from date of receipt. After reconstitution, at 4°C for one month. It can also be aliquotted and stored frozen at -20°C for six months. Avoid repeated freeze-thaw cycles.
Note	For research use only
Application notes	Add 0.2ml of distilled water will yield a concentration of 500ug/ml.
Isotype	Rabbit IgG
Clonality	Polyclonal
MW	53 kDa
Uniprot ID	P21614
Expiration Date	12 months from date of receipt.



WB analysis of Gc using anti-Gc antibody...