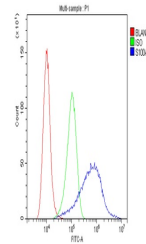


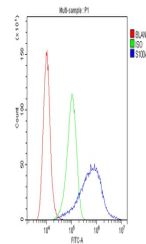
Product Datasheet

S100A10 Antibody (orb402277)

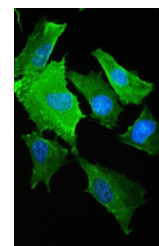
Description	S100A10 Antibody
Species/Host	Rabbit
Reactivity	Human, Monkey, Mouse, Rat
Conjugation	Unconjugated
Tested Applications	ELISA, FC, ICC, IF, IHC, WB
Immunogen	E. coli-derived human S100A10 recombinant protein (Position: Q4-K94).
Form/Appearance	Lyophilized
Concentration	Adding 0.2 ml of distilled water will yield a concentration of 500 µg/ml.
Storage	Store at -20°C for one year from date of receipt. After reconstitution, at 4°C for one month. It can also be aliquotted and stored frozen at -20°C for six months. Avoid repeated freeze-thaw cycles.
Note	For research use only
Application notes	Add 0.2ml of distilled water will yield a concentration of 500ug/ml.
Isotype	Rabbit IgG
Clonality	Polyclonal
MW	11 kDa
Uniprot ID	P60903
Dilution Range	Western blot, 0.1-0.5µg/ml Immunohistochemistry (Paraffin-embedded Section), 0.5-1µg/ml Immunohistochemistry (Frozen Section), 0.5-1µg/ml Immunocytochemistry, 0.5-1µg/ml Flow Cytometry, 1-3µg/1x10 ⁶ cells Immunofluorescence, 2µg/ml Direct ELISA, 0.1-0.5µg/ml
Expiration Date	12 months from date of receipt.



Flow Cytometry analysis of A549 cells us...



Flow Cytometry analysis of A431 cells us...



IF analysis of S100A10 using anti-S100A1...