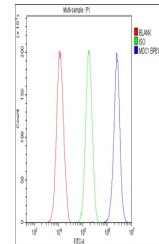


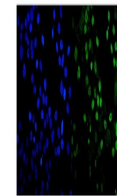
Product Datasheet

MDC1 Antibody (orb402240)

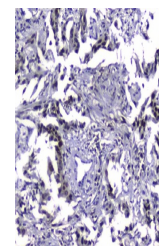
Description	MDC1 Antibody
Species/Host	Rabbit
Reactivity	Human
Conjugation	Unconjugated
Tested Applications	ELISA, FC, ICC, IF, IHC
Immunogen	E. coli-derived human MDC1 recombinant protein (Position: A534-Q626).
Form/Appearance	Lyophilized
Concentration	Adding 0.2 ml of distilled water will yield a concentration of 500 µg/ml.
Storage	Store at -20°C for one year from date of receipt. After reconstitution, at 4°C for one month. It can also be aliquotted and stored frozen at -20°C for six months. Avoid repeated freeze-thaw cycles.
Note	For research use only
Application notes	Add 0.2ml of distilled water will yield a concentration of 500ug/ml.
Isotype	Rabbit IgG
Clonality	Polyclonal
Uniprot ID	Q14676
Expiration Date	12 months from date of receipt.



Flow Cytometry analysis of 293T cells us...



IF analysis of MDC1 using anti-MDC1 anti...



IHC analysis of MDC1 using anti-MDC1 ant...