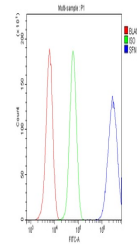


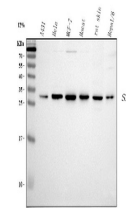
Product Datasheet

14-3-3 sigma/SFN Antibody (orb402233)

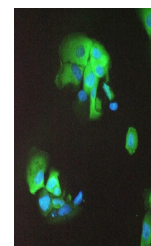
| | |
|----------------------------|---|
| Description | 14-3-3 sigma/SFN Antibody |
| Species/Host | Rabbit |
| Reactivity | Human, Mouse, Rat |
| Conjugation | Unconjugated |
| Tested Applications | ELISA, FC, ICC, IF, IHC, WB |
| Immunogen | E. coli-derived human 14-3-3 sigma recombinant protein (Position: M1-S248). |
| Form/Appearance | Lyophilized |
| Concentration | Adding 0.2 ml of distilled water will yield a concentration of 500 µg/ml. |
| Storage | Store at -20°C for one year from date of receipt. After reconstitution, at 4°C for one month. It can also be aliquotted and stored frozen at -20°C for six months. Avoid repeated freeze-thaw cycles. |
| Note | For research use only |
| Application notes | Add 0.2ml of distilled water will yield a concentration of 500ug/ml. |
| Isotype | Rabbit IgG |
| Clonality | Polyclonal |
| MW | 28 kDa |
| Uniprot ID | P31947 |
| Expiration Date | 12 months from date of receipt. |



Flow Cytometry analysis of U2OS cells using anti-14-3-3 sigma antibody.



WB analysis of 14-3-3 sigma using anti-14-3-3 sigma antibody.



IF analysis of 14-3-3 sigma using anti-14-3-3 sigma antibody.