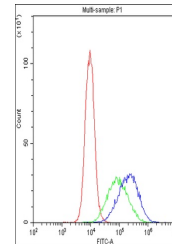


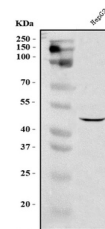
Product Datasheet

DC-SIGN/CD209 Antibody (orb402224)

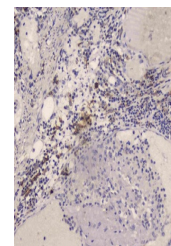
Description	DC-SIGN/CD209 Antibody
Species/Host	Rabbit
Reactivity	Human
Conjugation	Unconjugated
Tested Applications	FC, IHC, WB
Immunogen	A synthetic peptide corresponding to a sequence of human DC-SIGN (MSDSKEPRLQQLGLLEEEQLRGLGFRQTRGYKSLA).
Form/Appearance	Lyophilized
Concentration	Adding 0.2 ml of distilled water will yield a concentration of 500 µg/ml.
Storage	Store at -20°C for one year from date of receipt. After reconstitution, at 4°C for one month. It can also be aliquotted and stored frozen at -20°C for six months. Avoid repeated freeze-thaw cycles.
Note	For research use only
Application notes	Add 0.2ml of distilled water will yield a concentration of 500ug/ml.
Isotype	Rabbit IgG
Clonality	Polyclonal
MW	46 kDa
Uniprot ID	Q9NNX6
Expiration Date	12 months from date of receipt.



Flow Cytometry analysis of THP-1 cells u...



WB analysis of DC-SIGN using anti-DC-SIG...



IHC analysis of DC-SIGN using anti-DC-SI...