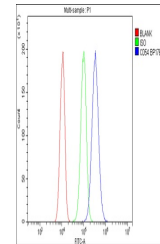


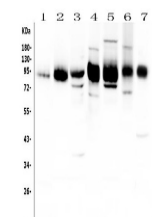
Product Datasheet

ICAM1 Antibody (orb402187)

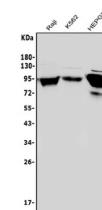
| | |
|----------------------------|---|
| Description | ICAM1 Antibody |
| Species/Host | Rabbit |
| Reactivity | Human, Mouse, Rat |
| Conjugation | Unconjugated |
| Tested Applications | ELISA, FC, ICC, IF, IHC, WB |
| Immunogen | E. coli-derived human ICAM1 recombinant protein (Position: Q28-R268). |
| Form/Appearance | Lyophilized |
| Concentration | Adding 0.2 ml of distilled water will yield a concentration of 500 µg/ml. |
| Storage | Store at -20°C for one year from date of receipt. After reconstitution, at 4°C for one month. It can also be aliquotted and stored frozen at -20°C for six months. Avoid repeated freeze-thaw cycles. |
| Note | For research use only |
| Application notes | Add 0.2ml of distilled water will yield a concentration of 500ug/ml. |
| Isotype | Rabbit IgG |
| Clonality | Polyclonal |
| MW | 90 kDa |
| Uniprot ID | P05362 |
| Expiration Date | 12 months from date of receipt. |



Flow Cytometry analysis of PC-3 cells us...



WB analysis of ICAM1 using anti-ICAM1 an...



WB analysis of ICAM1 using anti-ICAM1 an...