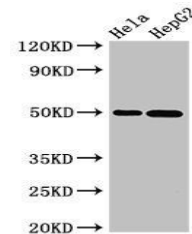


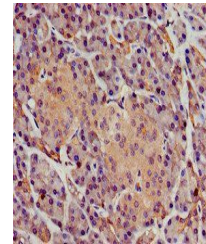
Product Datasheet

SGMS1 antibody (orb401060)

Description	SGMS1 antibody
Species/Host	Rabbit
Reactivity	Human
Conjugation	Unconjugated
Tested Applications	ELISA, IHC, WB
Immunogen	Recombinant Human Phosphatidylcholine:ceramide cholinephosphotransferase 1 protein (48-137AA)
Target	SGMS1
Preservatives	Preservative: 0.03% Proclin 300. Constituents: 50% Glycerol
Form/Appearance	Liquid
Storage	Maintain refrigerated at 2-8°C for up to 2 weeks. For long term storage store at -20°C in small aliquots to prevent freeze-thaw cycles.
Note	For research use only
Isotype	IgG
Clonality	Polyclonal
Uniprot ID	Q86VZ5
Dilution Range	WB:1:500-5000, IHC-P:1:200-500
Expiration Date	12 months from date of receipt.



Western blot analysis of HeLa whole cell...



Immunohistochemical staining of human pa...