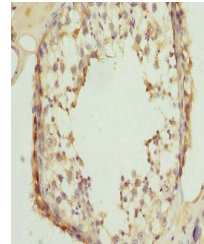


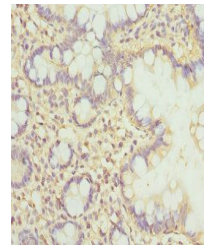
## Product Datasheet

### CLASP1 antibody (orb40085)

|                            |   |
|----------------------------|---|
| <b>Description</b>         | CLASP1 antibody   |
| <b>Species/Host</b>        | Rabbit  |
| <b>Reactivity</b>          | Human   |
| <b>Conjugation</b>         | Unconjugated  |
| <b>Tested Applications</b> | ELISA, IHC  |
| <b>Immunogen</b>           | Recombinant Human CLIP-associating protein 1 protein (1389-1538AA)  |
| <b>Target</b>              | CLASP1  |
| <b>Preservatives</b>       | PBS with 0.02% sodium azide, 50% glycerol, pH7.3.   |
| <b>Form/Appearance</b>     | Liquid  |
| <b>Storage</b>             | Maintain refrigerated at 2-8°C for up to 2 weeks. For long term storage store at -20°C in small aliquots to prevent freeze-thaw cycles. |
| <b>Note</b>                | For research use only   |
| <b>Isotype</b>             | IgG   |
| <b>Clonality</b>           | Polyclonal  |
| <b>Uniprot ID</b>          | <a href="#">Q7Z460</a>  |
| <b>Dilution Range</b>      | IHC-P:1:20-200  |
| <b>Expiration Date</b>     | 12 months from date of receipt.   |



Immunohistochemical staining of human te...



Immunohistochemical staining of human sm...