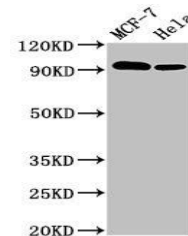


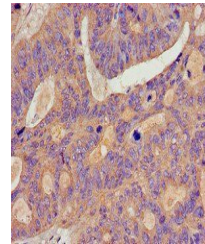
Product Datasheet

BCAR1 antibody (orb400792)

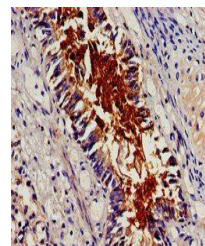
Description	BCAR1 antibody
Species/Host	Rabbit
Reactivity	Human
Conjugation	Unconjugated
Tested Applications	ELISA, IF, IHC, WB
Immunogen	Recombinant Human Breast cancer anti-estrogen resistance protein 1 protein (68-218AA)
Target	BCAR1
Preservatives	Preservative: 0.03% Proclin 300. Constituents: 50% Glycerol
Form/Appearance	Liquid
Storage	Maintain refrigerated at 2-8°C for up to 2 weeks. For long term storage store at -20°C in small aliquots to prevent freeze-thaw cycles.
Note	For research use only
Isotype	IgG
Clonality	Polyclonal
Uniprot ID	P56945
Dilution Range	WB:1:500-5000, IHC-P:1:20-200, IF:1:50-200
Expiration Date	12 months from date of receipt.



Western blot analysis of MCF-7 whole cel...



Immunohistochemical staining of human co...



Immunohistochemical staining of human lu...