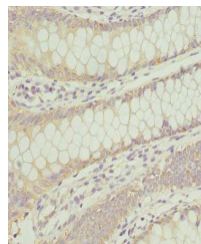


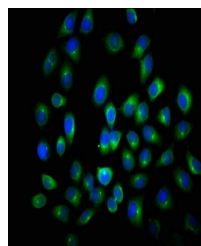
Product Datasheet

ANAPC2 antibody (orb40072)

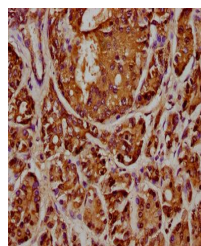
Description	ANAPC2 antibody
Species/Host	Rabbit
Reactivity	Human
Conjugation	Unconjugated
Tested Applications	ELISA, IF, IHC
Immunogen	Recombinant Human Anaphase-promoting complex subunit 2 protein (1-230AA)
Target	ANAPC2
Preservatives	PBS with 0.02% sodium azide, 50% glycerol, pH7.3.
Form/Appearance	Liquid
Storage	Maintain refrigerated at 2-8°C for up to 2 weeks. For long term storage store at -20°C in small aliquots to prevent freeze-thaw cycles.
Note	For research use only
Isotype	IgG
Clonality	Polyclonal
Uniprot ID	Q9UJX6
Dilution Range	IHC-P:1:20-500, IF:1:50-200
Expiration Date	12 months from date of receipt.



Immunohistochemical staining of human co...



Immunofluorescence analysis of A549 cell...



Immunohistochemical staining of human pa...