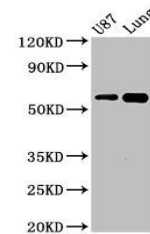


Product Datasheet

SHC3 antibody (orb400692)

Description	SHC3 antibody
Species/Host	Rabbit
Reactivity	Human, Mouse
Conjugation	Unconjugated
Tested Applications	ELISA, WB
Immunogen	Recombinant Human SHC-transforming protein 3 protein (323-468AA)
Target	SHC3
Preservatives	Preservative: 0.03% Proclin 300. Constituents: 50% Glycerol
Form/Appearance	Liquid
Storage	Maintain refrigerated at 2-8°C for up to 2 weeks. For long term storage store at -20°C in small aliquots to prevent freeze-thaw cycles.
Note	For research use only
Isotype	IgG
Clonality	Polyclonal
Uniprot ID	Q92529
Dilution Range	ELISA
Expiration Date	12 months from date of receipt.



Western blot analysis of U87 whole cell ...