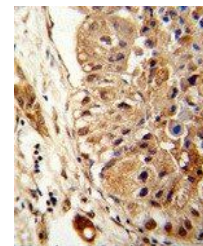
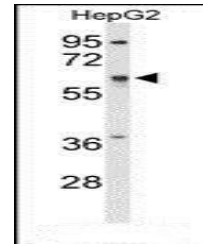


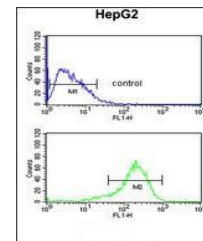
Product Datasheet

ATLA2 antibody (orb40061)

Description	Peptide affinity purified rabbit polyclonal antibody.
Species/Host	Rabbit
Reactivity	Human
Conjugation	Unconjugated
Tested Applications	FC, IHC-P, WB
Immunogen	Synthetic Peptide
Target	ATL2
Form/Appearance	Purified polyclonal antibody supplied in PBS with 0.09% (W/V) sodium azide. This antibody is purified through a protein A column, followed by peptide affinity purification.
Storage	Maintain refrigerated at 2-8°C for up to 2 weeks. For long term storage store at -20°C in small aliquots to prevent freeze-thaw cycles
Note	For research use only
Isotype	Rabbit IgG
Clonality	Polyclonal
MW	66229
Uniprot ID	Q8NHH9
NCBI	NP_001129145.1 , NP_071769.2
Dilution Range	WB 1:50-1:100
Expiration Date	12 months from date of receipt.



Immunohistochemical staining of human he...



Flow cytometric analysis of HepG2 cells ...