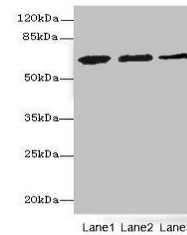


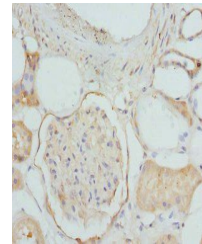
Product Datasheet

ETFDH antibody (orb39734)

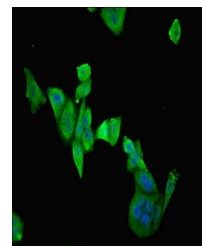
Description	ETFDH antibody
Species/Host	Rabbit
Reactivity	Human
Conjugation	Unconjugated
Tested Applications	ELISA, IF, IHC, WB
Immunogen	Recombinant Human Electron transfer flavoprotein-ubiquinone oxidoreductase, mitochondrial protein (318-617AA)
Target	ETFDH
Preservatives	PBS with 0.02% sodium azide, 50% glycerol, pH7.3.
Form/Appearance	Liquid
Storage	Maintain refrigerated at 2-8°C for up to 2 weeks. For long term storage store at -20°C in small aliquots to prevent freeze-thaw cycles.
Note	For research use only
Isotype	IgG
Clonality	Polyclonal
Uniprot ID	Q16134
Dilution Range	WB:1:500-2000, IHC-P:1:20-200, IF:1:50-200
Expiration Date	12 months from date of receipt.



Western blot analysis of Mouse liver(lan...



Immunohistochemical staining of human ki...



Immunofluorescence analysis of PC-3 cell...