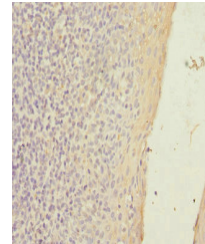


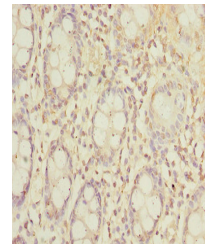
## Product Datasheet

### SLC23A2 antibody (orb39668)

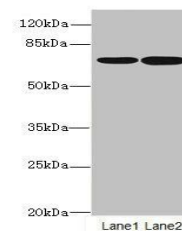
|                            |   |
|----------------------------|---|
| <b>Description</b>         | SLC23A2 antibody  |
| <b>Species/Host</b>        | Rabbit  |
| <b>Reactivity</b>          | Human   |
| <b>Conjugation</b>         | Unconjugated  |
| <b>Tested Applications</b> | ELISA, IHC, WB  |
| <b>Immunogen</b>           | Recombinant Human Solute carrier family 23 member 2 protein (1-90AA)  |
| <b>Target</b>              | SLC23A2   |
| <b>Preservatives</b>       | PBS with 0.02% sodium azide, 50% glycerol, pH7.3.   |
| <b>Form/Appearance</b>     | Liquid  |
| <b>Storage</b>             | Maintain refrigerated at 2-8°C for up to 2 weeks. For long term storage store at -20°C in small aliquots to prevent freeze-thaw cycles. |
| <b>Note</b>                | For research use only   |
| <b>Isotype</b>             | IgG   |
| <b>Clonality</b>           | Polyclonal  |
| <b>Uniprot ID</b>          | <a href="#">Q9UGH3</a>  |
| <b>Dilution Range</b>      | WB: 1: 1000-1:5000, IHC-P: 1:20-1:200   |
| <b>Expiration Date</b>     | 12 months from date of receipt.   |



Immunohistochemical staining of human to...



Immunohistochemical staining of human CO...



Western blot analysis of SH-SY5Y(lane 1)...