
Product Datasheet

Angiotensinogen antibody (orb396147)

Description

Angiotensinogen antibody

Species/Host

Rabbit

Reactivity

Canine, Equine, Human, Mouse, Porcine, Rat

Conjugation

Unconjugated

Tested

ELISA, IHC-P, WB

Applications
Immunogen

KLH conjugated synthetic peptide derived from human Angiotensin II. Please contact us for the exact immunogen sequence. The peptide is available as orb374701

Target

Angiotensinogen

Form/Appearance

10 mM PBS, 0.02% sodium azide

Concentration

- 100 µg (in 200 µl): 0.5 mg/ml- 200 µg (in 400 µl): 0.5 mg/ml

Storage

Store at 4°C for up to two weeks. For long term storage, aliquot and store at -20°C, avoid freeze/thaw cycles.

Note

For research use only

Isotype

IgG

Clonality

Polyclonal

Purity

Polyclonal antibodies are purified by peptide affinity chromatography

MW

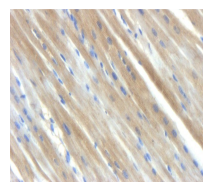
41 kDa

Uniprot ID
[P11859](#), [P01015](#), [P01019](#)
NCBI
[000029](#), [000020](#)
Entrez
[183](#)
Dilution Range

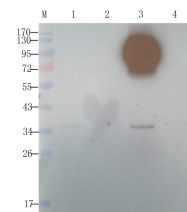
WB: 1:200-1000, IHC-P: 1:100-500

Expiration Date

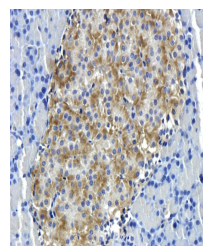
12 months from date of receipt.



Immunohistochemical staining of paraffin...



IHC-P staining of pig heart tissue using...



Western blot analysis of mouse liver (la...