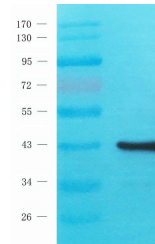


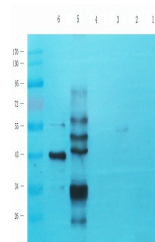
Product Datasheet

RBM4 antibody (orb395805)

Description	RBM4 antibody
Species/Host	Rabbit
Reactivity	Human, Rat
Conjugation	Unconjugated
Tested Applications	WB
Immunogen	KLH conjugated synthetic peptide derived from human RBM4. Please contact us for the exact immunogen sequence.
Target	RBM4
Form/Appearance	10 mM PBS, 0.02% sodium azide
Concentration	- 100 µg (in 200 µl): 0.5 mg/ml- 200 µg (in 400 µl): 0.5 mg/ml
Storage	Store at 4°C for up to two weeks. For long term storage, aliquot and store at -20°C, avoid freeze/thaw cycles.
Note	For research use only
Isotype	IgG
Clonality	Polyclonal
Purity	Polyclonal antibodies are purified by peptide affinity chromatography
MW	40 kDa
Uniprot ID	Q9BWF3 , D4A1W5
NCBI	001185772 , 001198843
Entrez	5936
Dilution Range	WB: 1:200-2000
Expiration Date	12 months from date of receipt.



WB analysis of human hela cell lysates t...



WB analysis of mouse brain (lane 1), rat...