
Product Datasheet

STEAP1 antibody (orb395795)

Description

STEAP1 antibody

Species/Host

Rabbit

Reactivity

Guinea pig, Human, Mouse, Rat

Conjugation

Unconjugated

Tested

IHC-P, WB

Applications
Immunogen

KLH conjugated synthetic peptide derived from human STEAP1. Please contact us for the exact immunogen sequence.

Target

STEAP1

Form/Appearance

10 mM PBS, 0.02% sodium azide

Concentration

- 100 µg (in 200 µl): 0.5 mg/ml- 200 µg (in 400 µl): 0.5 mg/ml

Storage

Store at 4°C for up to two weeks. For long term storage, aliquot and store at -20°C, avoid freeze/thaw cycles.

Note

For research use only

Isotype

IgG

Clonality

Polyclonal

Purity

Polyclonal antibodies are purified by peptide affinity chromatography

MW

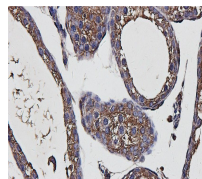
40 kDa

Uniprot ID
[D3ZEK7](#), [Q9CWR7](#), [Q9UHE8](#)
NCBI
[012449](#), [036581](#)
Entrez
[26872](#)
Dilution Range

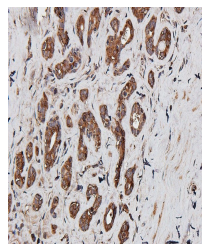
IHC-P: 1: 100-600, WB: 1:100-500

Expiration Date

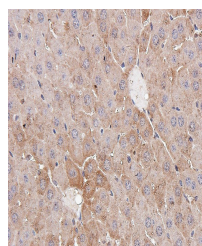
12 months from date of receipt.



Immunohistochemical staining of guinea p...



IHC-P staining of human breast cancer ti...



Immunohistochemical staining of mouse li...