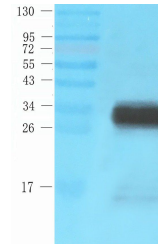


Product Datasheet

birA antibody (orb395792)

Description	birA antibody
Species/Host	Rabbit
Reactivity	E. coli
Conjugation	Unconjugated
Tested Applications	WB
Immunogen	KLH conjugated synthetic peptide derived from human birA. Please contact us for the exact immunogen sequence.
Target	birA
Form/Appearance	10 mM PBS, 0.02% sodium azide
Concentration	- 100 µg (in 200 µl): 0.5 mg/ml- 200 µg (in 400 µl): 0.5 mg/ml
Storage	Store at 4°C for up to two weeks. For long term storage, aliquot and store at -20°C, avoid freeze/thaw cycles.
Note	For research use only
Isotype	IgG
Clonality	Polyclonal
Purity	Polyclonal antibodies are purified by peptide affinity chromatography
MW	35 kDa
Dilution Range	WB: 1:200-2000
Expiration Date	12 months from date of receipt.



Western blot analysis of e. coli b121 (L...