

---

## Product Datasheet

### Aquaporin 5 antibody (orb395791)

**Description**

Aquaporin 5 antibody

**Species/Host**

Rabbit

**Reactivity**

Guinea pig, Human, Mouse, Rat

**Conjugation**

Unconjugated

**Tested Applications**

IHC-P, WB

**Immunogen**

KLH conjugated synthetic peptide derived from human Aquaporin 5. Please contact us for the exact immunogen sequence.

**Target**

Aquaporin 5

**Form/Appearance**

10 mM PBS, 0.02% sodium azide

**Concentration**

- 100 µg (in 200 µl): 0.5 mg/ml- 200 µg (in 400 µl): 0.5 mg/ml

**Storage**

Store at 4°C for up to two weeks. For long term storage, aliquot and store at -20°C, avoid freeze/thaw cycles.

**Note**

For research use only

**Isotype**

IgG

**Clonality**

Polyclonal

**Purity**

Polyclonal antibodies are purified by peptide affinity chromatography

**MW**

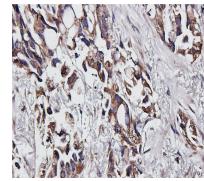
28 kDa

**Uniprot ID**
[Q9WTY4](#), [P47864](#), [P55064](#)
**NCBI**
[001651](#), [001642](#)
**Entrez**
[362](#)
**Dilution Range**

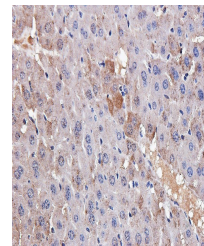
IHC-P: 1: 100-600, WB: 1:100-800

**Expiration Date**

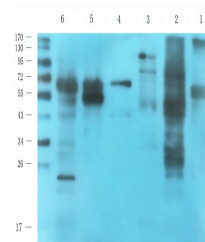
12 months from date of receipt.



Immunohistochemical staining of human liver tissue



IHC-P image of mouse liver tissue using ...



WB analysis of rat liver (lane 1), mouse...