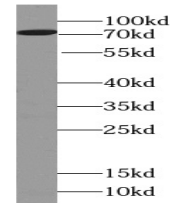


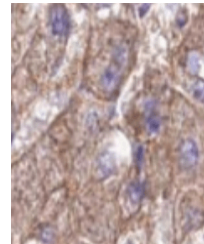
Product Datasheet

Willin antibody (orb395770)

Description	Rabbit polyclonal antibody to Willin.
Species/Host	Rabbit
Reactivity	Human, Mouse, Rat
Conjugation	Unconjugated
Tested Applications	ELISA, IHC, WB
Immunogen	FERM domain containing 6
Form/Appearance	liquid
Storage	PBS with 0.02% sodium azide and 50% glycerol pH 7.3,-20°C for 24 months(Avoid repeated freeze / thaw cycles.)
Note	For research use only
Isotype	IgG
Clonality	Polyclonal
Purity	≥95% as determined by SDS-PAGE
MW	100 kDa
Uniprot ID	Q96NE9
Dilution Range	WB: 1:500-1:5000, IHC:1:20-1:200
Expiration Date	12 months from date of receipt.



Western blot analysis of Recombinant protein...



Immunohistochemical staining of paraffin...