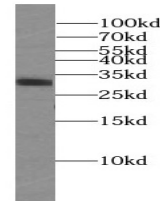


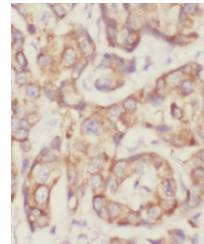
Product Datasheet

SUMF2 antibody (orb395631)

Description	Rabbit polyclonal antibody to SUMF2.
Species/Host	Rabbit
Reactivity	Human, Mouse, Rat
Conjugation	Unconjugated
Tested Applications	ELISA, IHC, IP, WB
Immunogen	sulfatase modifying factor 2
Form/Appearance	liquid
Storage	PBS with 0.02% sodium azide and 50% glycerol pH 7.3,-20°C for 24 months(Avoid repeated freeze / thaw cycles.)
Note	For research use only
Isotype	IgG
Clonality	Polyclonal
Purity	≥95% as determined by SDS-PAGE
MW	34 kDa
Uniprot ID	Q8NBJ7
Dilution Range	WB: 1:500-1:1000; IP: 1:500-1:1000; IHC: 1:50-1:500
Expiration Date	12 months from date of receipt.



Western blot analysis of A431 cells usin...



Immunohistochemical staining of paraffin...