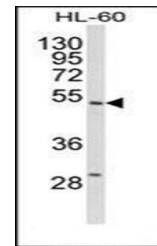
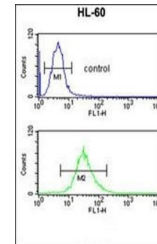


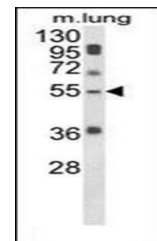
Product Datasheet

SELENBP1 antibody (orb39561)

Description	Peptide affinity purified rabbit polyclonal antibody.
Species/Host	Rabbit
Reactivity	Human, Mouse
Conjugation	Unconjugated
Tested Applications	FC, WB
Immunogen	Synthetic Peptide
Target	SELENBP1
Form/Appearance	Purified polyclonal antibody supplied in PBS with 0.09% (W/V) sodium azide. This antibody is purified through a protein A column, followed by peptide affinity purification.
Storage	Maintain refrigerated at 2-8°C for up to 2 weeks. For long term storage store at -20°C in small aliquots to prevent freeze-thaw cycles
Note	For research use only
Isotype	Rabbit IgG
Clonality	Polyclonal
MW	52391
Uniprot ID	Q13228
NCBI	NP_001245218.1 , NP_003935.2 , NP_001245217.1
Dilution Range	WB: 1:1000, FACS: 1:10-50
Expiration Date	12 months from date of receipt.



Western blot analysis of in HL-60 cell l...



Western blot analysis of in mouse lung t...