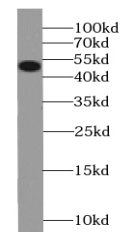


Product Datasheet

Smtnl1 (phospho-S301) antibody (orb395591)

Description	Rabbit polyclonal antibody to Smtnl1 (phospho-S301).
Species/Host	Rabbit
Reactivity	Mouse
Conjugation	Unconjugated
Tested Applications	ELISA, WB
Immunogen	smoothelin-like 1
Form/Appearance	liquid
Storage	PBS with 0.02% sodium azide and 50% glycerol pH 7.3,-20°C for 24 months(Avoid repeated freeze / thaw cycles.)
Note	For research use only
Isotype	IgG
Clonality	Polyclonal
Purity	≥95% as determined by SDS-PAGE
MW	50 kDa
Uniprot ID	A8MU46
Dilution Range	WB: 1:500-1:1000
Expiration Date	12 months from date of receipt.



Western blot analysis of mouse bladder t...