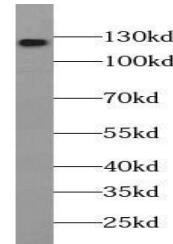


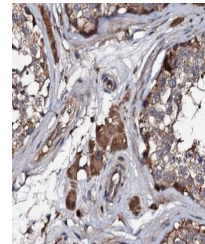
## Product Datasheet

### Integrin beta-3 antibody (orb395206)

<b>Description</b>	Rabbit polyclonal antibody to Integrin beta-3.
<b>Species/Host</b>	Rabbit
<b>Reactivity</b>	Human, Rat
<b>Conjugation</b>	Unconjugated
<b>Tested Applications</b>	ELISA, IHC, WB
<b>Immunogen</b>	integrin, beta 3 (platelet glycoprotein IIIa, antigen CD61)
<b>Form/Appearance</b>	liquid
<b>Storage</b>	PBS with 0.02% sodium azide and 50% glycerol pH 7.3 , -20°C for 24 months (Avoid repeated freeze / thaw cycles.)
<b>Note</b>	For research use only
<b>Isotype</b>	IgG
<b>Clonality</b>	Polyclonal
<b>Purity</b>	≥95% as determined by SDS-PAGE
<b>MW</b>	110 kDa
<b>Uniprot ID</b>	<b>P05106</b>
<b>Dilution Range</b>	WB: 1:500 - 1:2000; IHC: 1:50 - 1:200
<b>Expiration Date</b>	12 months from date of receipt.



Western blot analysis of human placenta ...



Immunohistochemical staining of paraffin...