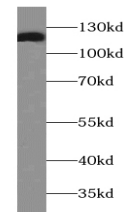


## Product Datasheet

### Integrin alpha-3 antibody (orb395201)

<b>Description</b>	Rabbit polyclonal antibody to Integrin alpha-3.
<b>Species/Host</b>	Rabbit
<b>Reactivity</b>	Human
<b>Conjugation</b>	Unconjugated
<b>Tested Applications</b>	ELISA, IF, IP, WB
<b>Immunogen</b>	integrin, alpha 3(antigen CD49C, alpha 3 subunit of VLA-3 receptor)
<b>Form/Appearance</b>	liquid
<b>Storage</b>	PBS with 0.02% sodium azide and 50% glycerol pH 7.3,-20°C for 24 months(Avoid repeated freeze / thaw cycles.)
<b>Note</b>	For research use only
<b>Isotype</b>	IgG
<b>Clonality</b>	Polyclonal
<b>Purity</b>	≥95% as determined by SDS-PAGE
<b>MW</b>	120 kDa
<b>Uniprot ID</b>	<b>P26006</b>
<b>Dilution Range</b>	WB: 1:500-1:1000; IP: 1:500-1:1000; IF: 1:20-1:200
<b>Expiration Date</b>	12 months from date of receipt.



Western blot analysis of PC-3 cells using...