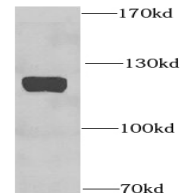


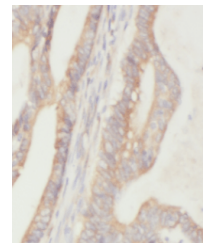
Product Datasheet

HRP 2 antibody (orb395153)

Description	Rabbit polyclonal antibody to HRP 2.
Species/Host	Rabbit
Reactivity	Human, Mouse, Rat
Conjugation	Unconjugated
Tested Applications	ELISA, IF, IHC, IP, WB
Immunogen	hepatoma-derived growth factor-related protein 2
Form/Appearance	liquid
Storage	PBS with 0.02% sodium azide and 50% glycerol pH 7.3,-20°C for 24 months(Avoid repeated freeze / thaw cycles.)
Note	For research use only
Isotype	IgG
Clonality	Polyclonal
Purity	≥95% as determined by SDS-PAGE
MW	110-120 kDa
Uniprot ID	Q7Z4V5
Dilution Range	WB: 1:500-1:3000; IP:1:5000-1:50000; IHC: 1:50-1:500; IF: 1:50-1:500
Expiration Date	12 months from date of receipt.



Western blot analysis of HepG2 cells usi...



Immunohistochemical staining of paraffin...