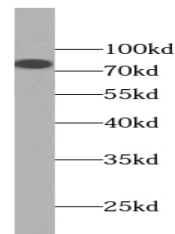


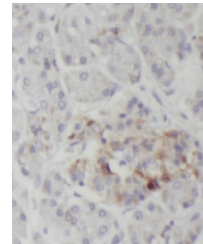
## Product Datasheet

### Granulin antibody (orb395097)

|                            |   |
|----------------------------|---|
| <b>Description</b>         | Rabbit polyclonal antibody to Granulin.   |
| <b>Species/Host</b>        | Rabbit  |
| <b>Reactivity</b>          | Human   |
| <b>Conjugation</b>         | Unconjugated  |
| <b>Tested Applications</b> | ELISA, IHC, WB  |
| <b>Immunogen</b>           | granulin  |
| <b>Form/Appearance</b>     | liquid  |
| <b>Storage</b>             | PBS with 0.02% sodium azide and 50% glycerol pH 7.3,-20°C for 24 months(Avoid repeated freeze / thaw cycles.) |
| <b>Note</b>                | For research use only   |
| <b>Isotype</b>             | IgG   |
| <b>Clonality</b>           | Polyclonal  |
| <b>Purity</b>              | ≥95% as determined by SDS-PAGE  |
| <b>MW</b>                  | 68 kDa, 70-88 kDa   |
| <b>Uniprot ID</b>          | <b>P28799</b>   |
| <b>Dilution Range</b>      | WB: 1:500-1:1000; IHC: 1:20-1:200   |
| <b>Expiration Date</b>     | 12 months from date of receipt.   |



Western blot analysis of mouse lung tiss...



Immunohistochemical staining of paraffin...