

Product Datasheet

CDC42EP3 antibody (orb39468)

Description Peptide affinity purified rabbit polyclonal antibody.

Species/Host Rabbit

Reactivity Human

Conjugation Unconjugated

Tested Applications FC, IHC-P, WB

Immunogen Synthetic Peptide

Target CDC42EP3

Form/Appearance Purified polyclonal antibody supplied in PBS with 0.09% (W/V) sodium azide. This antibody is purified through a protein A column, followed by peptide affinity purification.

Storage Maintain refrigerated at 2-8°C for up to 2 weeks. For long term storage store at -20°C in small aliquots to prevent freeze-thaw cycles

Note For research use only

Isotype Rabbit IgG

Clonality Polyclonal

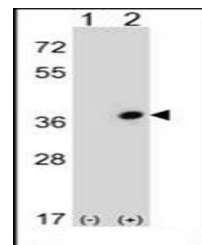
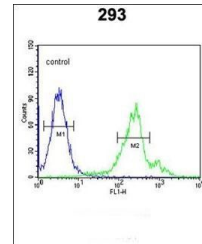
MW 27678

Uniprot ID [Q9UKI2](#)

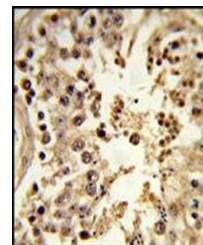
NCBI [NP_006440.2](#), [NP_001257365.1](#), [NP_001257366.1](#), [NP_001257367.1](#)

Dilution Range WB: 1:1000, IHC-P: 1:50-100, FACS: 1:10-50

Expiration Date 12 months from date of receipt.



Western blot analysis of 293 cell lysate...



Immunohistochemical staining of paraffin...