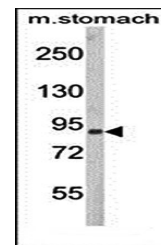
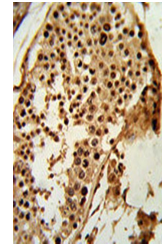


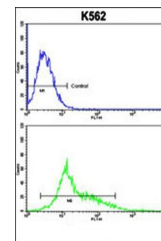
Product Datasheet

PARD3 antibody (orb39369)

Description	Peptide affinity purified rabbit polyclonal antibody.
Species/Host	Rabbit
Reactivity	Human, Mouse
Conjugation	Unconjugated
Tested Applications	FC, IHC-P, WB
Immunogen	Synthetic Peptide
Target	PARD3
Form/Appearance	Purified polyclonal antibody supplied in PBS with 0.09% (W/V) sodium azide. This antibody is purified through a protein A column, followed by peptide affinity purification.
Storage	Maintain refrigerated at 2-8°C for up to 2 weeks. For long term storage store at -20°C in small aliquots to prevent freeze-thaw cycles
Note	For research use only
Isotype	Rabbit IgG
Clonality	Polyclonal
MW	151423
Uniprot ID	Q8TEW0
NCBI	NP_001171718.1 , NP_001171715.1 , NP_001171720.1 , NP_001171714.1 , NP_062565.2 , NP_001171719.1 , NP_001171723.1 , NP_001171722.1 , NP_001171717.1 , NP_001171716.1 , NP_001171721.1
Dilution Range	WB: 1:1000, IHC-P: 1:50-100, FACS: 1:10-50
Expiration Date	12 months from date of receipt.



Western blot analysis of PARD3 antibody ...



Flow cytometric analysis of PARD3 antibody...