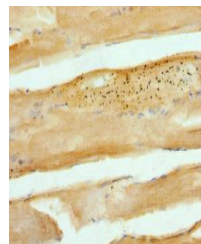


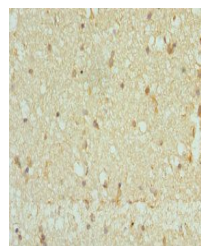
Product Datasheet

CAMK2B antibody (orb39360)

Description	CAMK2B antibody
Species/Host	Rabbit
Reactivity	Human
Conjugation	Unconjugated
Tested Applications	ELISA, IHC
Immunogen	Recombinant Human Calcium/calmodulin-dependent protein kinase type II subunit beta protein (1-300AA)
Target	CAMK2B
Preservatives	PBS with 0.02% sodium azide, 50% glycerol, pH7.3.
Form/Appearance	Liquid
Storage	Maintain refrigerated at 2-8°C for up to 2 weeks. For long term storage store at -20°C in small aliquots to prevent freeze-thaw cycles.
Note	For research use only
Isotype	IgG
Clonality	Polyclonal
Uniprot ID	Q13554
Dilution Range	IHC-P:1:20-200
Expiration Date	12 months from date of receipt.



Immunohistochemistry of paraffin-embedde...



Immunohistochemistry of paraffin-embedde...