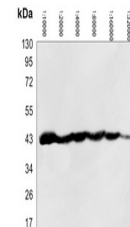


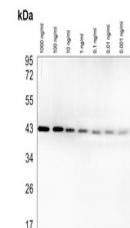
## Product Datasheet

### ACTB antibody (HRP) (orb393340)

<b>Description</b>	Mouse monoclonal again ACTB conjugated to HRP.
<b>Species/Host</b>	Rabbit
<b>Reactivity</b>	Human, Mouse, Porcine, Primate, Rabbit, Rat, Zebrafish
<b>Conjugation</b>	HRP
<b>Tested Applications</b>	WB
<b>Immunogen</b>	KLH-conjugated synthetic peptide encompassing a sequence of human Beta-actin-HRP labled. The exact sequence is proprietary.
<b>Target</b>	ACTB
<b>Preservatives</b>	Liquid in 0.42% Potassium phosphate, 0.87% Sodium chloride, pH 7.3, 30% glycerol, and 0.01% sodium azide.
<b>Form/Appearance</b>	Liquid in 0.42% Potassium phosphate, 0.87% Sodium chloride, pH 7.3, 30% glycerol, and 0.01% sodium azide.
<b>Storage</b>	Shipped at 4°C. Upon delivery aliquot and store at -20°C for one year. Avoid freeze/thaw cycles.
<b>Note</b>	For research use only
<b>Clonality</b>	Monoclonal
<b>Source</b>	Mouse
<b>Uniprot ID</b>	<a href="#">P60709</a> , <a href="#">P60710</a> , <a href="#">P60711</a>
<b>Entrez</b>	<a href="#">11461</a> , <a href="#">81822</a> , <a href="#">60</a>
<b>Dilution Range</b>	WB: 1:2000:5000
<b>Expiration Date</b>	12 months from date of receipt.



Western blot analysis of Beta-actin Anti...



Western blot analysis of Beta-actin Anti...