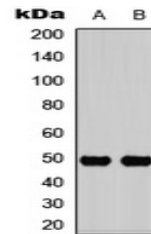


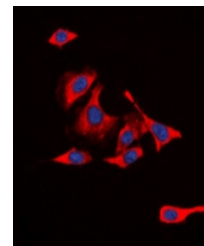
Product Datasheet

IL13RA1 (Phospho-Y405) antibody (orb393329)

Description	Rabbit polyclonal antibody to IL13RA1 (Phospho-Y405)
Species/Host	Rabbit
Reactivity	Human, Mouse, Primate
Conjugation	Unconjugated
Tested Applications	IF, WB
Immunogen	KLH-conjugated synthetic phosphopeptide corresponding to residues surrounding Y405 of human CD213a1 protein. The exact sequence is proprietary.
Target	IL13RA1
Preservatives	Liquid in 0.42% Potassium phosphate, 0.87% Sodium chloride, pH 7.3, 30% glycerol, and 0.01% sodium azide.
Form/Appearance	Liquid in 0.42% Potassium phosphate, 0.87% Sodium chloride, pH 7.3, 30% glycerol, and 0.01% sodium azide.
Storage	Maintain refrigerated at 2-8°C for up to 2 weeks. For long term storage store at -20°C in small aliquots to prevent freeze-thaw cycles.
Note	For research use only
Clonality	Polyclonal
Source	Rabbit
Uniprot ID	O09030 , P78552
Entrez	16164 , 3597
Dilution Range	WB: 1:500:1000, IF/ICC: 1:100:500
Expiration Date	12 months from date of receipt.



Western blot analysis of CD213a1 (Phospho-Y405) antibody



Immunofluorescent analysis of CD213a1 (Phospho-Y405) antibody