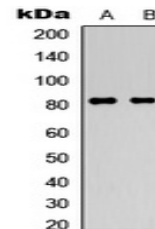


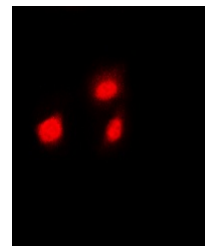
Product Datasheet

HSF1 (Phospho-S307) antibody (orb393320)

Description	Rabbit polyclonal antibody to HSF1 (Phospho-S307)
Species/Host	Rabbit
Reactivity	Human
Conjugation	Unconjugated
Tested Applications	IF, WB
Immunogen	KLH-conjugated synthetic phosphopeptide corresponding to residues surrounding S307 of human HSF1 protein. The exact sequence is proprietary.
Target	HSF1
Preservatives	Liquid in 0.42% Potassium phosphate, 0.87% Sodium chloride, pH 7.3, 30% glycerol, and 0.01% sodium azide.
Form/Appearance	Liquid in 0.42% Potassium phosphate, 0.87% Sodium chloride, pH 7.3, 30% glycerol, and 0.01% sodium azide.
Storage	Maintain refrigerated at 2-8°C for up to 2 weeks. For long term storage store at -20°C in small aliquots to prevent freeze-thaw cycles.
Note	For research use only
Clonality	Polyclonal
Source	Rabbit
Uniprot ID	Q00613
Entrez	3297
Dilution Range	WB: 1:500:1000, IF/ICC: 1:100:500
Expiration Date	12 months from date of receipt.



Western blot analysis of HSF1 (Phospho-S...



Immunofluorescent analysis of HSF1 (Phos...