
Product Datasheet

HIST1H1B (Phospho-T17) antibody (orb393314)

Description

Rabbit polyclonal antibody to HIST1H1B

Species/Host

Rabbit

Reactivity

Human, Mouse, Primate, Rabbit, Rat

Conjugation

Unconjugated

Tested Applications

IF, IH, WB

Immunogen

KLH-conjugated synthetic phosphopeptide corresponding to residues surrounding T17 of human Histone H1 protein. The exact sequence is proprietary.

Target

HIST1H1B

Preservatives

Liquid in 0.42% Potassium phosphate, 0.87% Sodium chloride, pH 7.3, 30% glycerol, and 0.01% sodium azide.

Form/Appearance

Liquid in 0.42% Potassium phosphate, 0.87% Sodium chloride, pH 7.3, 30% glycerol, and 0.01% sodium azide.

Storage

Maintain refrigerated at 2-8°C for up to 2 weeks. For long term storage store at -20°C in small aliquots to prevent freeze-thaw cycles.

Note

For research use only

Clonality

Polyclonal

Source

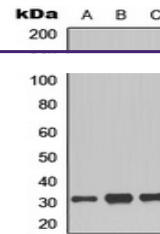
Rabbit

Uniprot ID
[P43274](#), [P16401](#), [P10412](#), [P43277](#), [P16402](#), [P43276](#)
Entrez
[14957](#), [3007](#), [50709](#), [3008](#), [56702](#), [3009](#)
Dilution Range

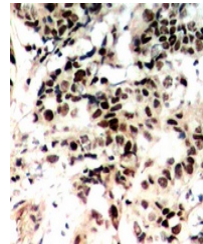
WB: 1:500:1000, IHC-P: 1:100:200, IF/ICC: 1:100:500

Expiration Date

12 months from date of receipt.



Western blot analysis of Histone H1 (Pho...



Immunohistochemical analysis of Histone ...



Immunofluorescent analysis of Histone H1...