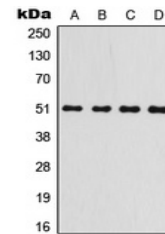


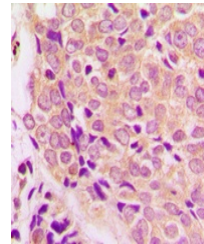
Product Datasheet

GSK3A antibody (orb393309)

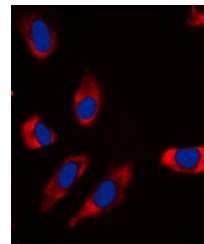
Description	Rabbit polyclonal antibody to GSK3A.
Species/Host	Rabbit
Reactivity	Human, Mouse, Rat
Conjugation	Unconjugated
Tested Applications	IF, IH, IP, WB
Immunogen	KLH-conjugated synthetic peptide encompassing a sequence within the N-term region of human GSK3 alpha. The exact sequence is proprietary.
Target	GSK3A
Preservatives	Liquid in 0.42% Potassium phosphate, 0.87% Sodium chloride, pH 7.3, 30% glycerol, and 0.01% sodium azide.
Form/Appearance	Liquid in 0.42% Potassium phosphate, 0.87% Sodium chloride, pH 7.3, 30% glycerol, and 0.01% sodium azide.
Storage	Maintain refrigerated at 2-8°C for up to 2 weeks. For long term storage store at -20°C in small aliquots to prevent freeze-thaw cycles.
Note	For research use only
Clonality	Polyclonal
Source	Rabbit
Uniprot ID	P49840 , Q2NL51 , P18265
Entrez	50686 , 606496 , 2931
Dilution Range	WB: 1:500:1000, IHC-P: 1:100:200, IF/ICC: 1:100:500, IP: 1:10:100
Expiration Date	12 months from date of receipt.



Western blot analysis of GSK3 alpha expr...



Immunohistochemical analysis of GSK3 alp...



Immunofluorescent analysis of GSK3 alpha...