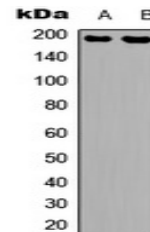


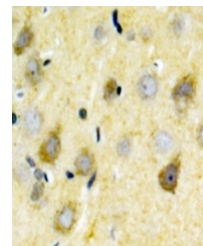
Product Datasheet

GRIN2B (Phospho-Y1336) antibody (orb393307)

Description	Rabbit polyclonal antibody to GRIN2B (Phospho-Y1336)
Species/Host	Rabbit
Reactivity	Human, Mouse, Rat
Conjugation	Unconjugated
Tested Applications	IH, WB
Immunogen	KLH-conjugated synthetic phosphopeptide corresponding to residues surrounding Y1336 of human NMDAR2B protein. The exact sequence is proprietary.
Target	GRIN2B
Preservatives	Liquid in 0.42% Potassium phosphate, 0.87% Sodium chloride, pH 7.3, 30% glycerol, and 0.01% sodium azide.
Form/Appearance	Liquid in 0.42% Potassium phosphate, 0.87% Sodium chloride, pH 7.3, 30% glycerol, and 0.01% sodium azide.
Storage	Maintain refrigerated at 2-8°C for up to 2 weeks. For long term storage store at -20°C in small aliquots to prevent freeze-thaw cycles.
Note	For research use only
Clonality	Polyclonal
Source	Rabbit
Uniprot ID	Q00960 , Q01097 , Q13224
Entrez	24410 , 14812 , 2904
Dilution Range	WB: 1:500:1000, IHC-P: 1:100:200
Expiration Date	12 months from date of receipt.



Western blot analysis of NMDAR2B (Phospho-Y1336)



Immunohistochemical analysis of NMDAR2B