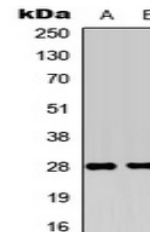


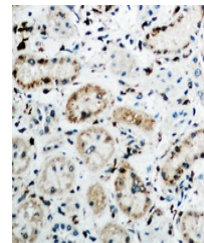
Product Datasheet

FGF18 antibody (orb393287)

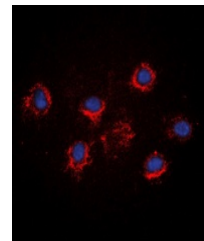
Description	Rabbit polyclonal antibody to FGF18.
Species/Host	Rabbit
Reactivity	Human
Conjugation	Unconjugated
Tested Applications	IF, IH, WB
Immunogen	KLH-conjugated synthetic peptide encompassing a sequence within the C-term region of human FGF19. The exact sequence is proprietary.
Target	FGF19
Preservatives	Liquid in 0.42% Potassium phosphate, 0.87% Sodium chloride, pH 7.3, 30% glycerol, and 0.01% sodium azide.
Form/Appearance	Liquid in 0.42% Potassium phosphate, 0.87% Sodium chloride, pH 7.3, 30% glycerol, and 0.01% sodium azide.
Storage	Shipped at 4°C. Upon delivery aliquot and store at -20°C for one year. Avoid freeze/thaw cycles.
Note	For research use only
Clonality	Polyclonal
Source	Rabbit
Uniprot ID	O95750
Entrez	9965
Dilution Range	WB: 1:500:1000, IHC-P: 1:100:200, IF/ICC: 1:100:500
Expiration Date	12 months from date of receipt.



Western blot analysis of FGF19 expressio...



Immunohistochemical analysis of FGF19 st...



Immunofluorescent analysis of FGF19 stai...