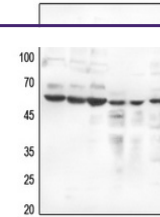

Product Datasheet

Estrogen Receptor beta (Phospho-S105) antibody (orb393279)

Description

Rabbit polyclonal antibody to Estrogen

kDa A B C D E F



Western blot analysis of Estrogen Recept...



Immunofluorescent analysis of Estrogen R...

Species/Host

Rabbit

Reactivity

Human, Mouse, Rat

Conjugation

Unconjugated

Tested Applications

IF, WB

Immunogen

KLH-conjugated synthetic phosphopeptide corresponding to residues surrounding S105 of human Estrogen Receptor beta protein. The exact sequence is proprietary.

Target

ESR2

Preservatives

Liquid in 0.42% Potassium phosphate, 0.87% Sodium chloride, pH 7.3, 30% glycerol, and 0.01% sodium azide.

Form/Appearance

Liquid in 0.42% Potassium phosphate, 0.87% Sodium chloride, pH 7.3, 30% glycerol, and 0.01% sodium azide.

Storage

Maintain refrigerated at 2-8°C for up to 2 weeks. For long term storage store at -20°C in small aliquots to prevent freeze-thaw cycles.

Note

For research use only

Clonality

Polyclonal

Source

Rabbit

Uniprot ID
[O08537](#), [Q92731](#), [Q62986](#)
Entrez
[13983](#), [25149](#), [2100](#)
Dilution Range

WB: 1:500:1000, IF/ICC: 1:100:500

Expiration Date

12 months from date of receipt.