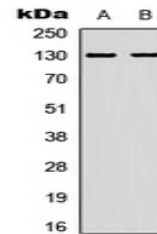


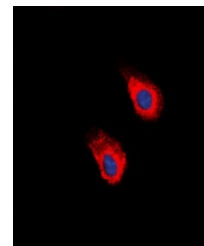
Product Datasheet

EPHA2 (Phospho-Y588/596) antibody (orb393275)

Description	Rabbit polyclonal antibody to EPHA2 (Phospho-Y588/596)
Species/Host	Rabbit
Reactivity	Human, Mouse, Primate, Rat
Conjugation	Unconjugated
Tested Applications	IF, WB
Immunogen	KLH-conjugated synthetic phosphopeptide corresponding to residues surrounding Y588/596 of human EPHA2 protein. The exact sequence is proprietary.
Target	EPHA2; EPHA3; EPHA4
Preservatives	Liquid in 0.42% Potassium phosphate, 0.87% Sodium chloride, pH 7.3, 30% glycerol, and 0.01% sodium azide.
Form/Appearance	Liquid in 0.42% Potassium phosphate, 0.87% Sodium chloride, pH 7.3, 30% glycerol, and 0.01% sodium azide.
Storage	Maintain refrigerated at 2-8°C for up to 2 weeks. For long term storage store at -20°C in small aliquots to prevent freeze-thaw cycles.
Note	For research use only
Clonality	Polyclonal
Source	Rabbit
Uniprot ID	O08680 , P29320 , Q03145 , P29319 , P54764 , P29317 , Q03137
Entrez	13838 , 2042 , 1969 , 29210 , 2043 , 13836
Dilution Range	WB: 1:500:1000, IF/ICC: 1:100:500
Expiration Date	12 months from date of receipt.



Western blot analysis of EPHA2 (Phospho-...



Immunofluorescent analysis of EPHA2 (Pho...