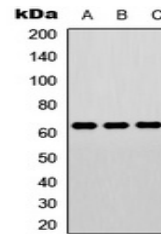


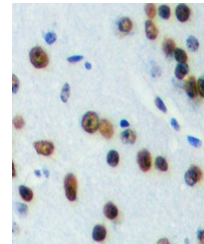
Product Datasheet

ELK1 (Phospho-T417) antibody (orb393273)

Description	Rabbit polyclonal antibody to ELK1 (Phospho-T417)
Species/Host	Rabbit
Reactivity	Human, Mouse, Rat
Conjugation	Unconjugated
Tested Applications	IH, IP, WB
Immunogen	KLH-conjugated synthetic phosphopeptide corresponding to residues surrounding T417 of human ELK1 protein. The exact sequence is proprietary.
Target	ELK1
Preservatives	Liquid in 0.42% Potassium phosphate, 0.87% Sodium chloride, pH 7.3, 30% glycerol, and 0.01% sodium azide.
Form/Appearance	Liquid in 0.42% Potassium phosphate, 0.87% Sodium chloride, pH 7.3, 30% glycerol, and 0.01% sodium azide.
Storage	Maintain refrigerated at 2-8°C for up to 2 weeks. For long term storage store at -20°C in small aliquots to prevent freeze-thaw cycles.
Note	For research use only
Clonality	Polyclonal
Source	Rabbit
Uniprot ID	P19419, P41969
Entrez	13712, 2002
Dilution Range	WB: 1:500:1000, IHC-P: 1:100:200, IP: 1:10:100
Expiration Date	12 months from date of receipt.



Western blot analysis of ELK1 (Phospho-T...



Immunohistochemical analysis of ELK1 (Ph...