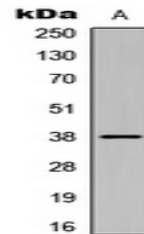


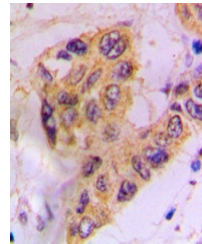
Product Datasheet

CSNK1A1 (Phospho-Y294) antibody (orb393259)

Description	Rabbit polyclonal antibody to CSNK1A1 (Phospho-Y294)
Species/Host	Rabbit
Reactivity	Human, Mouse, Rabbit, Rat, Sheep
Conjugation	Unconjugated
Tested Applications	IH, WB
Immunogen	KLH-conjugated synthetic phosphopeptide corresponding to residues surrounding Y294 of human CK1 alpha protein. The exact sequence is proprietary.
Target	CSNK1A1
Preservatives	Liquid in 0.42% Potassium phosphate, 0.87% Sodium chloride, pH 7.3, 30% glycerol, and 0.01% sodium azide.
Form/Appearance	Liquid in 0.42% Potassium phosphate, 0.87% Sodium chloride, pH 7.3, 30% glycerol, and 0.01% sodium azide.
Storage	Maintain refrigerated at 2-8°C for up to 2 weeks. For long term storage store at -20°C in small aliquots to prevent freeze-thaw cycles.
Note	For research use only
Clonality	Polyclonal
Source	Rabbit
Uniprot ID	Q8BK63 , P97633 , Q8N752 , P48729
Entrez	122011 , 113927 , 1452
Dilution Range	WB: 1:500:1000, IHC-P: 1:100:200
Expiration Date	12 months from date of receipt.



Western blot analysis of CK1 alpha (Phos...



Immunohistochemical analysis of CK1 alph...