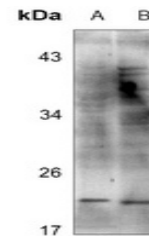


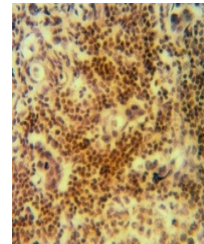
Product Datasheet

CFL1 antibody (orb393241)

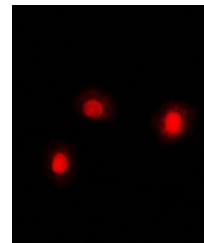
Description	Rabbit polyclonal antibody to CFL1.
Species/Host	Rabbit
Reactivity	Human, Mouse, Porcine, Rat, Sheep, Zebrafish
Conjugation	Unconjugated
Tested Applications	IF, IH, WB
Immunogen	KLH-conjugated synthetic peptide encompassing a sequence within the center region of human Cofilin. The exact sequence is proprietary.
Target	CFL1; CFL2
Preservatives	Liquid in 0.42% Potassium phosphate, 0.87% Sodium chloride, pH 7.3, 30% glycerol, and 0.01% sodium azide.
Form/Appearance	Liquid in 0.42% Potassium phosphate, 0.87% Sodium chloride, pH 7.3, 30% glycerol, and 0.01% sodium azide.
Storage	Maintain refrigerated at 2-8°C for up to 2 weeks. For long term storage store at -20°C in small aliquots to prevent freeze-thaw cycles.
Note	For research use only
Clonality	Polyclonal
Source	Rabbit
Uniprot ID	P23528 , P18760 , Q9Y281 , P45591 , P45592
Entrez	1073 , 12632 , 1072 , 29271 , 12631
Dilution Range	WB: 1:500:1000, IF/ICC: 1:100:500
Expiration Date	12 months from date of receipt.



Western blot analysis of Cofilin express...



Immunohistochemical analysis of Cof ilin...



Immunofluorescent analysis of Cofilin st...