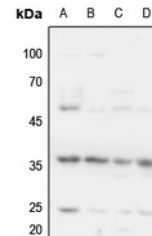


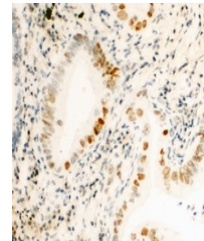
Product Datasheet

CCNH (Phospho-T315) antibody (orb393234)

Description	Rabbit polyclonal antibody to CCNH (Phospho-T315)
Species/Host	Rabbit
Reactivity	Human, Mouse, Porcine, Primate, Rat
Conjugation	Unconjugated
Tested Applications	IH, WB
Immunogen	KLH-conjugated synthetic phosphopeptide corresponding to residues surrounding T315 of human Cyclin H protein. The exact sequence is proprietary.
Target	CCNH
Preservatives	Liquid in 0.42% Potassium phosphate, 0.87% Sodium chloride, pH 7.3, 30% glycerol, and 0.01% sodium azide.
Form/Appearance	Liquid in 0.42% Potassium phosphate, 0.87% Sodium chloride, pH 7.3, 30% glycerol, and 0.01% sodium azide.
Storage	Maintain refrigerated at 2-8°C for up to 2 weeks. For long term storage store at -20°C in small aliquots to prevent freeze-thaw cycles.
Note	For research use only
Clonality	Polyclonal
Source	Rabbit
Uniprot ID	Q9R1A0 , P51946 , Q61458
Entrez	902 , 66671 , 84389
Dilution Range	WB: 1:500:1000, IHC-P: 1:100:200
Expiration Date	12 months from date of receipt.



Western blot analysis of Cyclin H (Phosp...



Immunohistochemical analysis of Cyclin H...