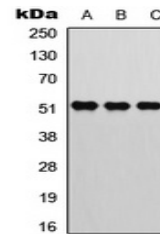


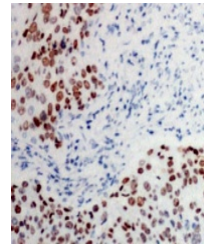
Product Datasheet

ATF2 (Phospho-T73) antibody (orb393215)

Description	Rabbit polyclonal antibody to ATF2 (Phospho-T73)
Species/Host	Rabbit
Reactivity	Human, Mouse, Rat, Zebrafish
Conjugation	Unconjugated
Tested Applications	IH, IP, WB
Immunogen	KLH-conjugated synthetic phosphopeptide corresponding to residues surrounding T73 of human ATF2 protein. The exact sequence is proprietary.
Target	ATF2
Preservatives	Liquid in 0.42% Potassium phosphate, 0.87% Sodium chloride, pH 7.3, 30% glycerol, and 0.01% sodium azide.
Form/Appearance	Liquid in 0.42% Potassium phosphate, 0.87% Sodium chloride, pH 7.3, 30% glycerol, and 0.01% sodium azide.
Storage	Maintain refrigerated at 2-8°C for up to 2 weeks. For long term storage store at -20°C in small aliquots to prevent freeze-thaw cycles.
Note	For research use only
Clonality	Polyclonal
Source	Rabbit
Uniprot ID	Q00969 , P16951 , P15336
Entrez	11909 , 81647 , 102641666 , 1386
Dilution Range	WB: 1:500:1000, IHC-P: 1:100:200, IP: 1:10:100
Expiration Date	12 months from date of receipt.



Western blot analysis of ATF2 (Phospho-T...



Immunohistochemical analysis of ATF2 (Ph...