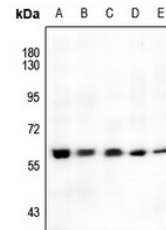


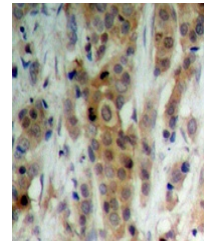
Product Datasheet

AKT1 (Phospho-S246) antibody (orb393201)

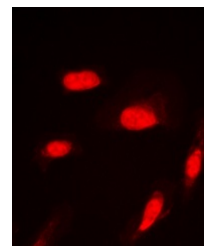
Description	Rabbit polyclonal antibody to AKT1 (Phospho-S246)
Species/Host	Rabbit
Reactivity	Human, Mouse, Rat, Zebrafish
Conjugation	Unconjugated
Tested Applications	IF, IH, WB
Immunogen	KLH-conjugated synthetic phosphopeptide corresponding to residues surrounding S246 of human AKT protein. The exact sequence is proprietary.
Target	AKT1
Preservatives	Liquid in 0.42% Potassium phosphate, 0.87% Sodium chloride, pH 7.3, 30% glycerol, and 0.01% sodium azide.
Form/Appearance	Liquid in 0.42% Potassium phosphate, 0.87% Sodium chloride, pH 7.3, 30% glycerol, and 0.01% sodium azide.
Storage	Maintain refrigerated at 2-8°C for up to 2 weeks. For long term storage store at -20°C in small aliquots to prevent freeze-thaw cycles.
Note	For research use only
Clonality	Polyclonal
Source	Rabbit
Uniprot ID	P47196 , P31750 , P31749
Entrez	207 , 24185 , 11651
Dilution Range	WB: 1:500:1000, IHC-P: 1:100:200, IF/ICC: 1:100:500
Expiration Date	12 months from date of receipt.



Western blot analysis of AKT (Phospho-S246) in lanes A, B, C, D, and E.



Immunohistochemical analysis of AKT (Phospho-S246) in tissue sections.



Immunofluorescent analysis of AKT (Phospho-S246) in cells.