

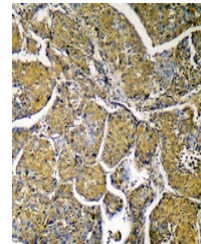
Product Datasheet

ACLY antibody (orb393195)

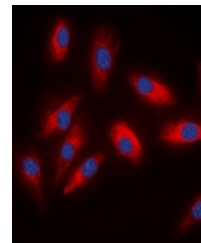
Description	Rabbit polyclonal antibody to ACLY.
Species/Host	Rabbit
Reactivity	Human, Mouse, Porcine, Rat
Conjugation	Unconjugated
Tested Applications	ELISA, IF, IH, WB
Immunogen	KLH-conjugated synthetic peptide encompassing a sequence within the center region of human ACLY. The exact sequence is proprietary.
Target	ACLY
Preservatives	Liquid in 0.42% Potassium phosphate, 0.87% Sodium chloride, pH 7.3, 30% glycerol, and 0.01% sodium azide.
Form/Appearance	Liquid in 0.42% Potassium phosphate, 0.87% Sodium chloride, pH 7.3, 30% glycerol, and 0.01% sodium azide.
Storage	Maintain refrigerated at 2-8°C for up to 2 weeks. For long term storage store at -20°C in small aliquots to prevent freeze-thaw cycles.
Note	For research use only
Clonality	Polyclonal
Source	Rabbit
Uniprot ID	Q91V92 , P16638 , P53396
Entrez	24159 , 47 , 104112
Dilution Range	ELISA: 1:5000:10000, WB: 1:500:1000, IHC-P: 1:100:200, IF/ICC: 1:100:500
Expiration Date	12 months from date of receipt.



Western blot analysis of ACLY expression...



Immunohistochemical analysis of ACLY sta...



Immunofluorescent analysis of ACLY stain...