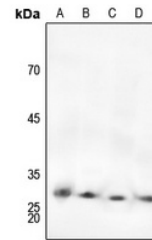


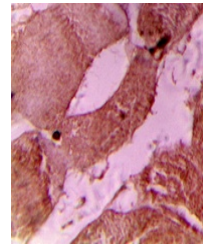
Product Datasheet

TNNI3 (Phospho-S22/S23) antibody (orb393177)

Description	Rabbit polyclonal antibody to TNNI3 (Phospho-S22/S23)
Species/Host	Rabbit
Reactivity	Human, Mouse, Porcine, Rabbit, Rat
Conjugation	Unconjugated
Tested Applications	IH, WB
Immunogen	KLH-conjugated synthetic phosphopeptide corresponding to residues surrounding S22/S23 of human cTnI protein. The exact sequence is proprietary.
Target	TNNI3
Preservatives	Liquid in 0.42% Potassium phosphate, 0.87% Sodium chloride, pH 7.3, 30% glycerol, and 0.01% sodium azide.
Form/Appearance	Liquid in 0.42% Potassium phosphate, 0.87% Sodium chloride, pH 7.3, 30% glycerol, and 0.01% sodium azide.
Storage	Maintain refrigerated at 2-8°C for up to 2 weeks. For long term storage store at -20°C in small aliquots to prevent freeze-thaw cycles.
Note	For research use only
Clonality	Polyclonal
Source	Rabbit
Uniprot ID	P48787 , P23693 , P19429
Entrez	7137 , 21954 , 29248
Dilution Range	WB: 1:500:1000, IHC-P: 1:100:200
Expiration Date	12 months from date of receipt.



Western blot analysis of cTnI (Phospho-S22/S23)



Immunohistochemical analysis of cTnI (Phospho-S22/S23)