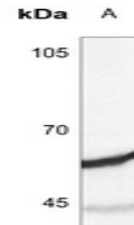


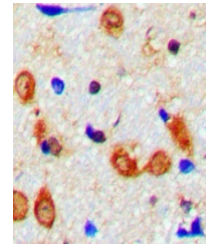
Product Datasheet

SYT1; SYT2 antibody (orb393173)

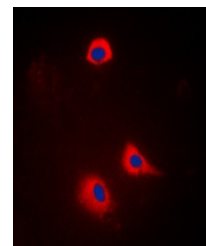
Description	Rabbit polyclonal antibody to SYT1; SYT2.
Species/Host	Rabbit
Reactivity	Human, Mouse, Rat
Conjugation	Unconjugated
Tested Applications	IF, IH, WB
Immunogen	KLH-conjugated synthetic peptide encompassing a sequence within the center region of human Synaptotagmin. The exact sequence is proprietary.
Target	SYT1; SYT2
Preservatives	Liquid in 0.42% Potassium phosphate, 0.87% Sodium chloride, pH 7.3, 30% glycerol, and 0.01% sodium azide.
Form/Appearance	Liquid in 0.42% Potassium phosphate, 0.87% Sodium chloride, pH 7.3, 30% glycerol, and 0.01% sodium azide.
Storage	Maintain refrigerated at 2-8°C for up to 2 weeks. For long term storage store at -20°C in small aliquots to prevent freeze-thaw cycles.
Note	For research use only
Clonality	Polyclonal
Source	Rabbit
Uniprot ID	P21579 , P29101 , P21707 , P46096 , P46097 , Q8N910
Entrez	20979 , 20980 , 127833 , 24805 , 25716 , 6857
Dilution Range	WB: 1:500:1000, IHC-P: 1:100:200, IF/ICC: 1:100:500
Expiration Date	12 months from date of receipt.



Western blot analysis of Synaptotagmin e...



Immunohistochemical analysis of Synaptot...



Immunofluorescent analysis of Synaptotag...