

---

## Product Datasheet

### STMN1 (Phospho-S25) antibody (orb393172)

**Description**

Rabbit polyclonal antibody to STMN1 (Phospho-

**Species/Host**

Rabbit

**Reactivity**

Human, Mouse, Porcine, Primate, Rabbit, Rat, Sheep

**Conjugation**

Unconjugated

**Tested Applications**

IF, IH, WB

**Immunogen**

KLH-conjugated synthetic phosphopeptide corresponding to residues surrounding S25 of human STMN1 protein. The exact sequence is proprietary.

**Target**

STMN1

**Preservatives**

Liquid in 0.42% Potassium phosphate, 0.87% Sodium chloride, pH 7.3, 30% glycerol, and 0.01% sodium azide.

**Form/Appearance**

Liquid in 0.42% Potassium phosphate, 0.87% Sodium chloride, pH 7.3, 30% glycerol, and 0.01% sodium azide.

**Storage**

Maintain refrigerated at 2-8°C for up to 2 weeks. For long term storage store at -20°C in small aliquots to prevent freeze-thaw cycles.

**Note**

For research use only

**Clonality**

Polyclonal

**Source**

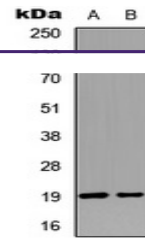
Rabbit

**Uniprot ID**
[P13668](#), [P54227](#), [P16949](#)
**Entrez**
[29332](#), [16765](#), [3925](#)
**Dilution Range**

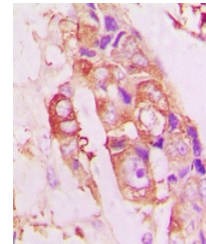
WB: 1:500:1000, IHC-P: 1:100:200, IF/ICC: 1:100:500

**Expiration Date**

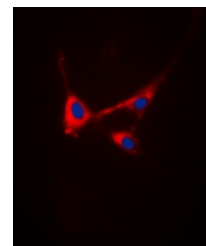
12 months from date of receipt.



Western blot analysis of STMN1 (Phospho-...



Immunohistochemical analysis of STMN1 (P...



Immunofluorescent analysis of STMN1 (Pho...